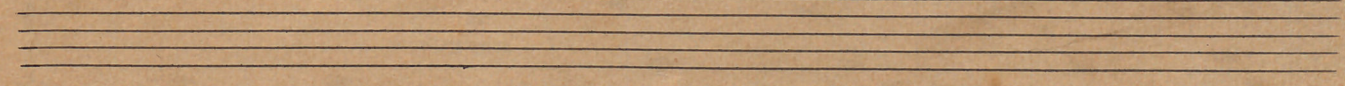
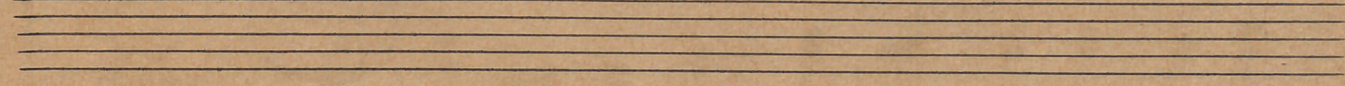
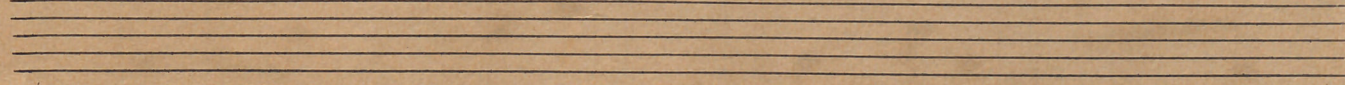
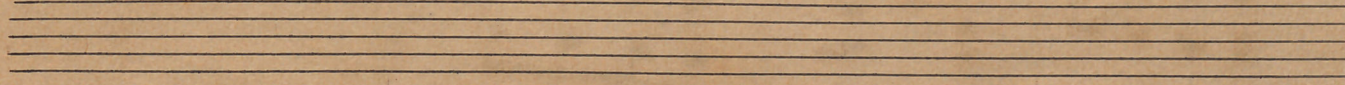
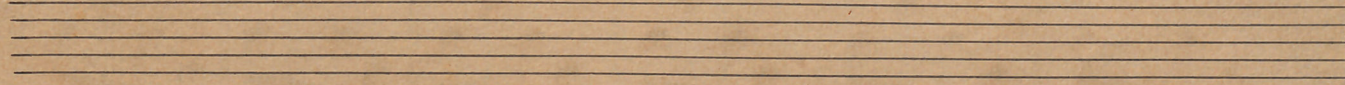
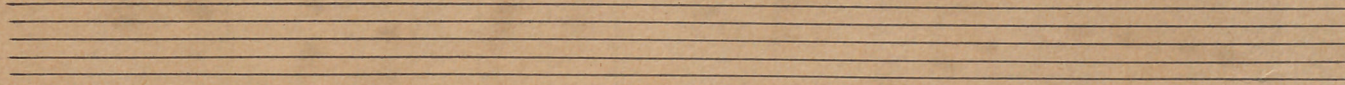
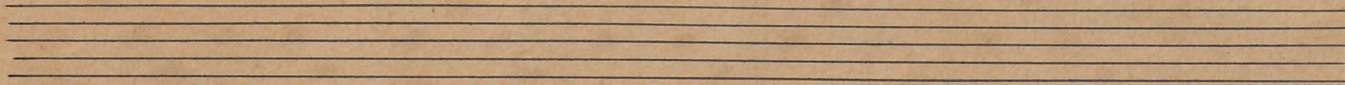
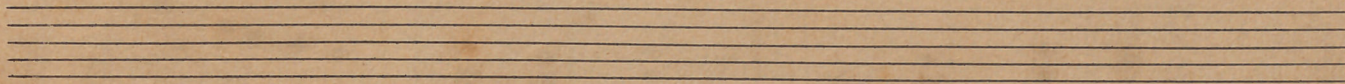
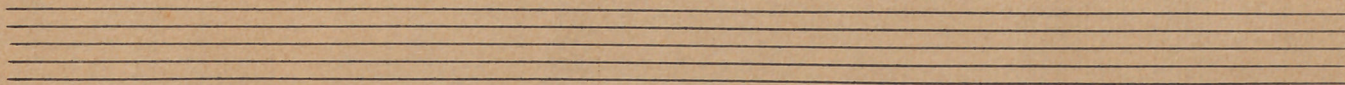
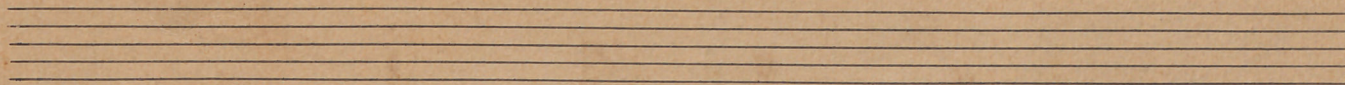


Canção do berço

2d



Lento

Handwritten musical score for piano in 2/4 time, marked "Lento" and "sempre legato". The score is written on four systems of staves. The key signature is three flats (B-flat, E-flat, A-flat). The first system includes the tempo marking "Lento" and the performance instruction "sempre legato". The score features a variety of musical notations, including eighth and sixteenth notes, rests, and dynamic markings such as *pp* and *p*. The piece concludes with a double bar line and a fermata over the final note.

Handwritten musical score, first system. Treble and bass staves. Key signature: three flats (B-flat, E-flat, A-flat). Dynamics: *pp* and *ppp*. Includes accents (*>*) and a first ending bracket labeled *8.<sup>a</sup>*.

Handwritten musical score, second system. Treble and bass staves. Key signature: three flats. Dynamics: *pp*. Includes accents (*>*) and a first ending bracket labeled *8.<sup>a</sup>*.

Handwritten musical score, third system. Treble and bass staves. Key signature: three flats. Dynamics: *pp*. Includes accents (*>*) and a first ending bracket labeled *8.<sup>a</sup>*.

Handwritten musical score, fourth system. Treble and bass staves. Key signature: three flats. Dynamics: *mf*. Includes a fermata over the final measure of the system.

Handwritten musical score, fifth system. Treble and bass staves. Key signature: three flats. Dynamics: *p*. Includes accents (*>*) and first ending brackets labeled *7*.

Red.

AD

