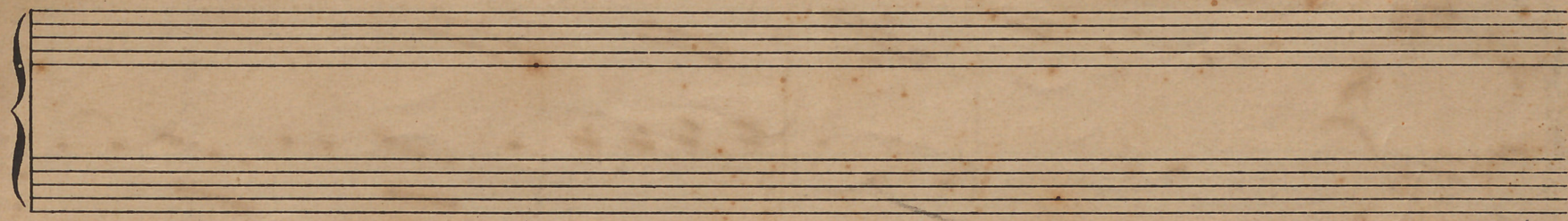


Opus 1

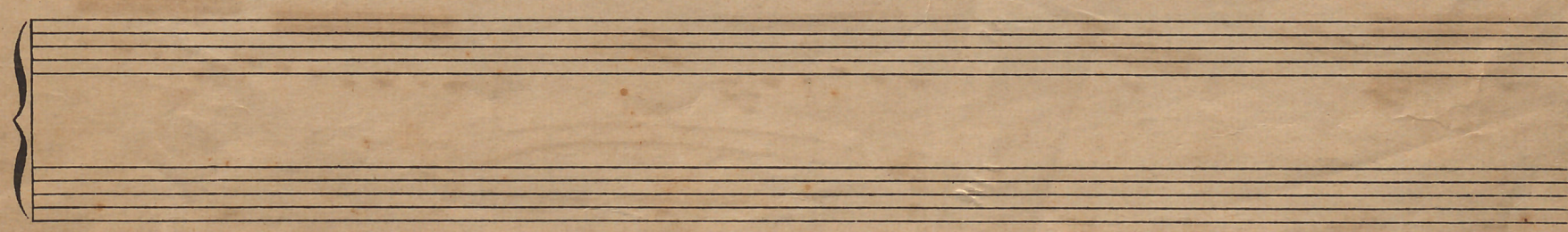


Quadros Poéticos
~~*Peças Características*~~

(opus 1)
para piano

por

Luis Costa



Fianadeira

Cópia de novo!
Allegro moderato

Handwritten musical notation for the first system. It consists of two staves: a treble staff and a bass staff. The key signature is two sharps (F# and C#), and the time signature is 6/8. The music begins with a treble staff containing several measures of music, followed by a bass staff with a few notes.

Handwritten musical notation for the second system. It features two staves. Above the treble staff, there are handwritten numbers indicating fingerings: '4', '3', and '3 4 3 2 1 4 2'. A bracket above the treble staff is labeled 'I vez'. The notation includes various notes and rests.

Handwritten musical notation for the third system. It consists of two staves. A bracket above the treble staff is labeled 'I vez'. The notation shows a continuation of the piece with various rhythmic patterns.

Handwritten musical notation for the fourth system. It features two staves with musical notation, including notes, rests, and some dynamic markings.

Handwritten musical notation for the fifth system. It consists of two staves. The bass staff features a long, sweeping melodic line that spans across several measures. The treble staff contains accompaniment.

Handwritten musical notation for the sixth system. It features two staves. The bass staff has a long melodic line that concludes the piece. The treble staff provides accompaniment.

Handwritten musical notation system 1, consisting of two staves. The upper staff contains a melodic line with various note values and rests. The lower staff contains a rhythmic accompaniment with repeated rhythmic patterns.

Handwritten musical notation system 2, consisting of two staves. The notation continues with similar melodic and rhythmic elements as the first system.

Handwritten musical notation system 3, consisting of two staves. The upper staff shows more complex melodic figures, and the lower staff continues the rhythmic accompaniment.

Handwritten musical notation system 4, consisting of two staves. This system includes a section marked "Allegro" in the lower staff, indicating a change in tempo. The notation features large, sweeping melodic arcs.

Handwritten musical notation system 5, consisting of two staves. The notation returns to a more rhythmic and melodic style similar to the earlier systems.

Handwritten musical notation system 6, consisting of two staves. The notation concludes with various melodic and rhythmic patterns.

Handwritten musical notation on a grand staff. The upper staff uses a treble clef and the lower staff uses a bass clef. The music features a variety of note values, including eighth and sixteenth notes, and rests. There are some scribbles and corrections in the first few measures.

Handwritten musical notation on a grand staff. A large blue bracket is drawn under the lower staff, spanning several measures. The notation includes various note values and rests.

Handwritten musical notation on a grand staff. The lower staff has a "m. d." marking above it. There are some scribbles at the end of the system.

Handwritten musical notation on a grand staff. A large blue bracket is drawn under the lower staff, spanning several measures. The notation includes various note values and rests.

Handwritten musical notation on a grand staff. The lower staff has a "ff" marking above it. There are some scribbles at the end of the system.

Handwritten musical notation on a grand staff. A large blue bracket is drawn under the lower staff, spanning several measures. The notation includes various note values and rests.

Handwritten musical notation on a grand staff. The right hand part features a melodic line with many slurs and some accidentals. The left hand part consists of a bass line with some chords. There are some handwritten marks above the staff, including a plus sign and some illegible characters.

Handwritten musical notation on a grand staff. The right hand part has a melodic line with slurs and some notes. The left hand part has a bass line with some chords. There are some handwritten marks above the staff, including a circled plus sign.

Handwritten musical notation on a grand staff. The right hand part has a melodic line with slurs and some notes. The left hand part has a bass line with some chords. There are some handwritten marks above the staff, including a circled plus sign and some illegible characters. A blue scribble is visible on the right side of the staff.

Handwritten musical notation on a grand staff. The right hand part has a melodic line with slurs and some notes. The left hand part has a bass line with some chords. There are some handwritten marks above the staff, including a circled plus sign.

Handwritten musical notation on a grand staff. The right hand part has a melodic line with slurs and some notes. The left hand part has a bass line with some chords. There are some handwritten marks above the staff, including a circled plus sign and the word "I very".

Handwritten musical notation on a grand staff. The right hand part has a melodic line with slurs and some notes. The left hand part has a bass line with some chords. There are some handwritten marks above the staff, including a circled plus sign and the word "I very".

Handwritten musical notation on a grand staff. The upper staff (treble clef) contains a complex melodic line with many beamed notes and some accidentals. The lower staff (bass clef) contains a simpler accompaniment with fewer notes.

Handwritten musical notation on a grand staff. The upper staff continues the melodic line. The lower staff has some notes and rests. A large, dark scribble is present on the left side of the page, partially overlapping the first two staves.

Handwritten musical notation on a grand staff. The upper staff has some notes and rests. The lower staff contains a series of rhythmic markings, possibly slurs or ties, written in a shorthand style.

Handwritten musical notation on a grand staff. The upper staff has a melodic line with some beaming. The lower staff has notes and rests, with some rhythmic markings below the staff.

Handwritten musical notation on a grand staff. The upper staff has a melodic line. The lower staff has notes and rests, with some rhythmic markings below the staff.

Handwritten musical notation on a grand staff. The upper staff has a melodic line. The lower staff has notes and rests. Dynamic markings are present: "piano" (p) and "forte" (f) are written near the bottom of the lower staff. There is also a large, dark scribble on the right side of the page.

Handwritten musical notation on a grand staff. The upper staff contains several measures of music with notes, slurs, and some scribbled-out passages. The lower staff contains rhythmic notation, possibly eighth notes, with some handwritten annotations.

Handwritten musical notation on a grand staff. The upper staff features a series of notes with slurs. The lower staff contains rhythmic notation, possibly eighth notes, with some handwritten annotations.

Handwritten musical notation on a grand staff. The upper staff contains notes and slurs. The lower staff features rhythmic notation, possibly eighth notes, with some handwritten annotations.

Handwritten musical notation on a grand staff. The upper staff contains notes and slurs. The lower staff features rhythmic notation, possibly eighth notes, with some handwritten annotations.

Handwritten musical notation on a grand staff. The upper staff contains notes and slurs. The lower staff features rhythmic notation, possibly eighth notes, with some handwritten annotations.

Handwritten musical notation on a grand staff. The upper staff contains notes and slurs. The lower staff features rhythmic notation, possibly eighth notes, with some handwritten annotations.

gammam

Composta em 4, 8, 903
 modificada a forma d'acompanha-
 mento em 8, 10, 907