

nas tri- as so- li- dões do ce- lum-

te- ras

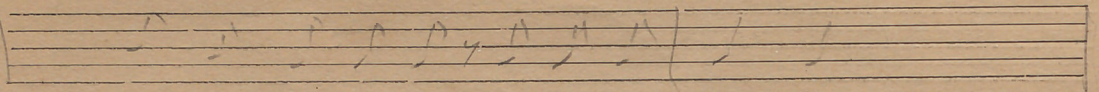
Mul-heres, mães e filhas, ra-

zes que- rem-se a si- ção

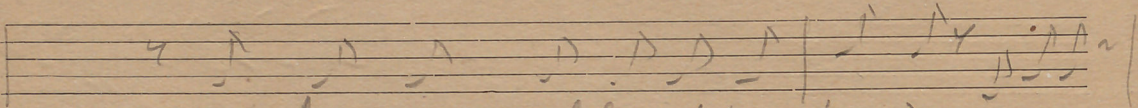
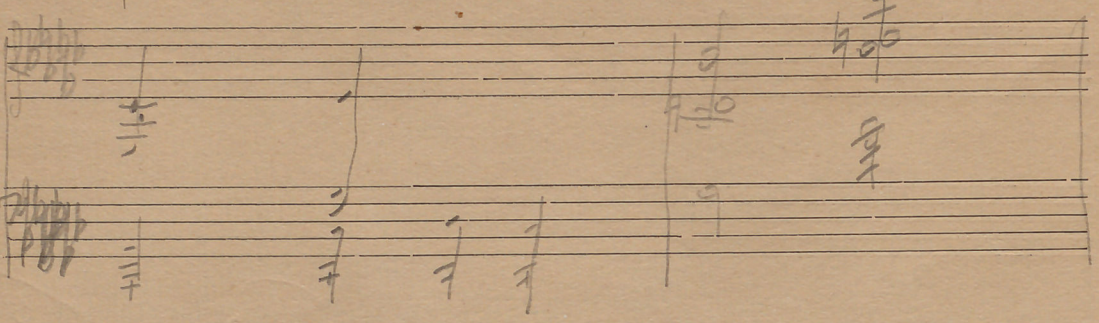
e he- lem um vi- tal so- fe- gi- do

b- + = b#

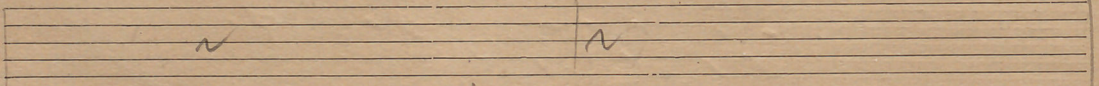
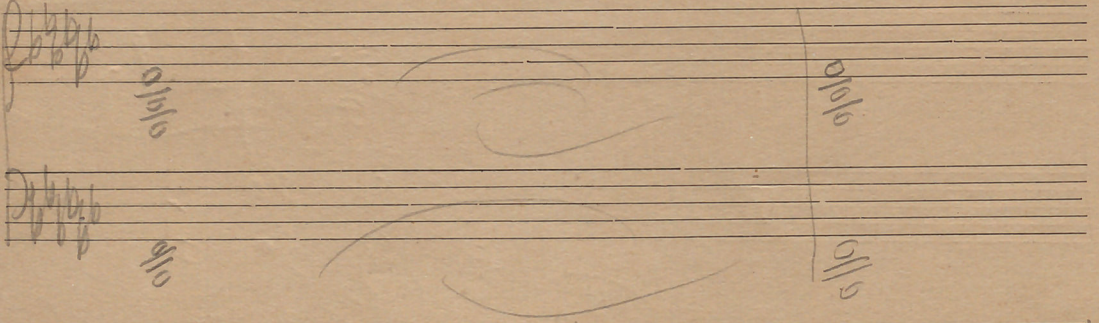
3



flu-viu de munte e do mis-te-rie

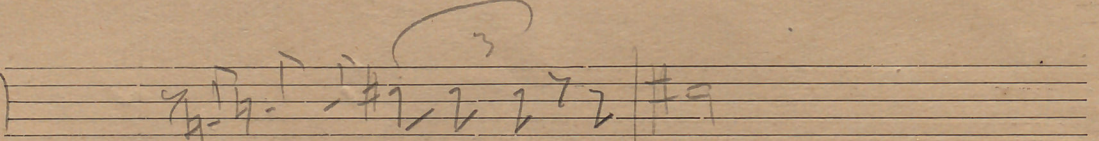
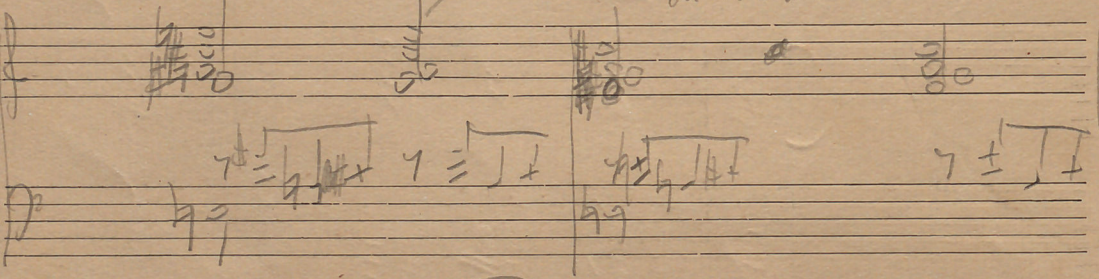


so-fer-mo-ri-ut tu-rol pro-fun-do e se-ru

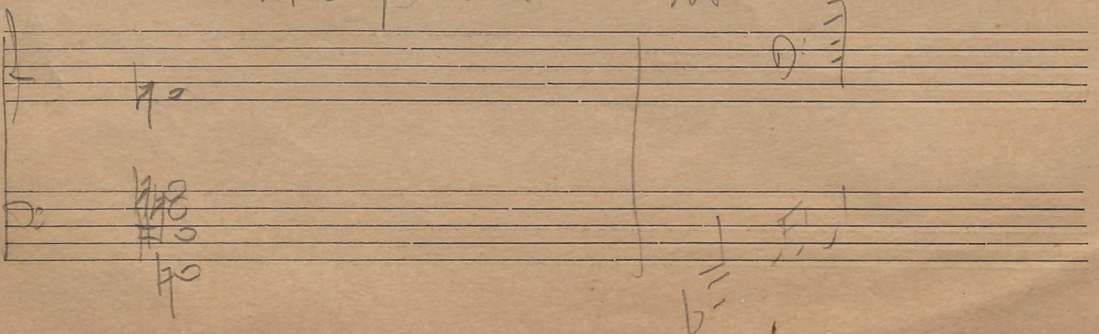


ser-gi-mu-ly-ty-ty-ty

ou ao clar-vo da lu-a



a tri-te pa-ti-do vi-sus



b-

ma-flu-vi-a

mon-te

e do mis-te-ri

So-lim-nos-entem-ral pro-fun-do e

his

Se-nis

Se-nis

es - so - me à luz do sol      meu cla - ro de lu - a a

tin - te pa - li - da vi - são

Fan - ta - sma do a - lum - tu - mo do si - de - vo

na a mal-di-co-ei a

mi-nhos fun-dos a-vi-das ro-

Si-zer

Lian-tin ni-vos na vi-da se-pa-

Handwritten musical notation on a single staff with lyrics: *no-dos Sa-n-gue-ri mor-te em sus-citatio-nis*

Empty musical staves.

Handwritten musical notation on a single staff with lyrics: *no-dos em nim re-nos-cem*

Handwritten musical notation on a single staff with lyrics: *no-dos em nim re-nos-cem*

Handwritten musical notation on a single staff with lyrics: *no-dos em nim re-nos-cem*

Handwritten musical notation on a single staff with lyrics: *no-dos em nim re-nos-cem*

Handwritten musical notation on a single staff with lyrics: *no-dos em nim re-nos-cem*

Handwritten musical notation on a single staff with lyrics: *no-dos em nim re-nos-cem*

Empty musical staves.

Handwritten musical notation on two staves, likely representing a keyboard or guitar accompaniment.

CASA MOREIRA DE SÁ—Músicas e instrumentos—105, Rua 31 de Janeiro, 107—PORTO



11

