

CASA MOREIRA DE SÁ — Músicas e Instrumentos — 105, Rua de Santo António, 107 — PORTO

Luiz Costa

Canções de Maria

Para Cantos e piano

Op. 8 N. 2

acção para

(volunt)

5 ~~1942~~ 1942



Canção de Maio  
(Pádua de Tuiçeira de Passoaes)  
Op. 8 n. 2

~~João~~ Carlos

Andantino

Musical notation for the first system, including a treble clef, a key signature of one sharp (F#), and a 3/4 time signature. The melody begins with a quarter rest followed by a quarter note G4, then a half note A4-B4. The lyrics are: Os ri-ossões de luz e de oi-ro são as

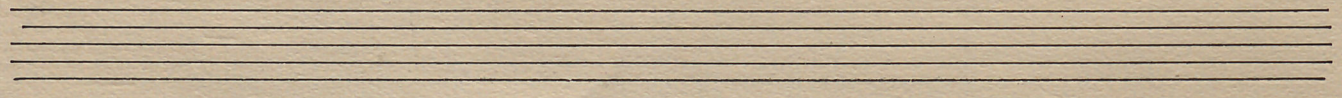
Piano accompaniment for the first system, consisting of two staves. The right hand features a rhythmic pattern of eighth notes, while the left hand provides a harmonic accompaniment with chords and single notes.

Musical notation for the second system. The melody continues with a quarter note G4, a quarter note A4, and a half note B4. The lyrics are: fon-tes e de oi-ro o mor-a-zul que

Piano accompaniment for the second system, continuing the harmonic support for the vocal line.

Musical notation for the third system. The melody continues with a quarter note G4, a quarter note A4, and a half note B4. The lyrics are: ha-nhas ho-ni-zon-tas Oa-ro-ma é tão in-

Piano accompaniment for the third system, concluding the piece with sustained chords in the right hand and single notes in the left hand.





ten- so em mai- o nos au- tei- vos que tal- da- vos- vos

The first system of the handwritten musical score consists of a vocal line on a single staff and a piano accompaniment on two staves. The key signature is one sharp (F#). The vocal line begins with a treble clef and contains the lyrics "ten- so em mai- o nos au- tei- vos que tal- da- vos- vos". The piano accompaniment features a right hand with chords and a left hand with a simple bass line. There are some ink smudges on the paper.

Cen- de va- gos me- ei- vos Cres- cen- do a cõr a- la- ga o

The second system continues the musical score. The vocal line has the lyrics "Cen- de va- gos me- ei- vos Cres- cen- do a cõr a- la- ga o". The piano accompaniment continues with similar chordal textures. The handwriting is consistent with the first system.

va- le o Cam- poã Sen- ra e jaí mel- se des- tin que O cen- zo- sul- du

The third system concludes the visible portion of the score. The vocal line has the lyrics "va- le o Cam- poã Sen- ra e jaí mel- se des- tin que O cen- zo- sul- du". The piano accompaniment ends with a few final chords. The page ends with several empty staves at the bottom.



ter- ra      8 ja mal se des- tin-gua o Ceu a-

zul da ter- ra

Pod-