

# Fiandeira

Para Canto e Piano

Letra de Francisco Braga

Musica de Luiz Costa

*Vivacetto* *Andante*

Canto

Piano

nos seus de - dos fi - an -

dei - na gi - nao fu - so sem ces - sar. Por - que

*cresc.*

tu mi-ri-a pre-ji-ra vis-pu-er-um de ca-

*f* *dim.*

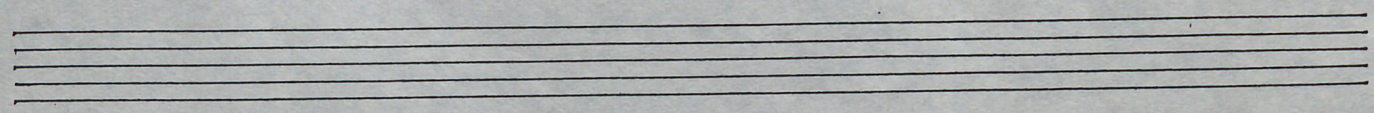
sa- & dum pa-ter sum ri-

val- lentes fi-tu-ri-vo- val

Handwritten musical score for the first system. The key signature is G major (one sharp). The system consists of three staves: a vocal line and two piano accompaniment staves. The lyrics "Mas não" are written below the vocal line. The piano part includes a bass line with a *p.* dynamic marking and a treble line with chords and a *p* dynamic marking.

Handwritten musical score for the second system. The key signature remains G major. The system consists of three staves. The lyrics "per - sos um um - To bu'es-te" are written below the vocal line. The piano accompaniment continues with a bass line and a treble line of chords.

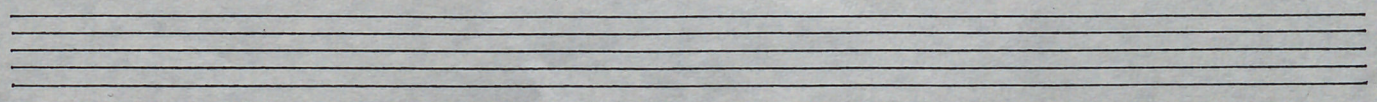
Handwritten musical score for the third system. The key signature remains G major. The system consists of three staves. The lyrics "um - do dá mais vol - tas do que us." are written below the vocal line. The piano accompaniment concludes with a bass line and a treble line of chords.



Handwritten musical notation for the first system. It consists of three staves: a vocal line in treble clef with a key signature of two sharps (F# and C#), and two piano accompaniment staves (treble and bass clefs). The lyrics are: "pi - nos que sol - tas a pen - sar no ca - sa."

Handwritten musical notation for the second system. It consists of three staves: a vocal line in treble clef with a key signature of two sharps, and two piano accompaniment staves. The lyrics are: "mi - to Com quanto ju - so vol - tai - a Fi -".

Handwritten musical notation for the third system. It consists of three staves: a vocal line in treble clef with a key signature of two sharps, and two piano accompaniment staves. The lyrics are: "an - do pa - no da tai - a e quem".



da- be- re- es- se- ti- bo- nae- qual- tu- rum- si-

*cresc.*

- ve- ni- An- ni- ci- a- a- mic- te- thur- tu- rum

*f*

cor- po- de- don- ze- la-

*dim.*

Di - zem que no em se ta - tha ( ) ca - sa - mento a nos -

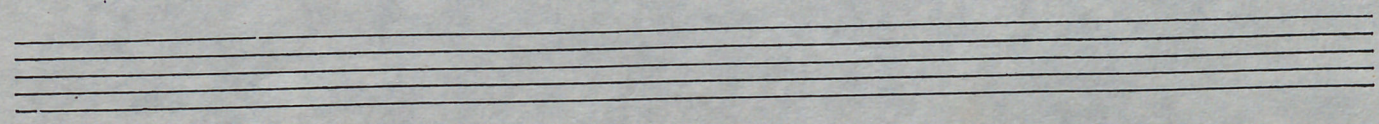
The first system consists of a vocal line on a treble clef staff and a piano accompaniment on a bass clef staff. The key signature is G major (one sharp). The vocal line begins with a quarter rest, followed by a series of eighth and quarter notes. The piano accompaniment features a bass line with a quarter rest, followed by a series of quarter notes and chords.

- ta - tha

The second system continues the musical piece. The vocal line has a quarter rest followed by a half note, then continues with eighth and quarter notes. The piano accompaniment includes a dynamic marking 'p' (piano) and features a bass line with quarter notes and chords, and a treble line with a melodic line.

Mas não te - nhos a i - dei - a em tão

The third system concludes the page. The vocal line has a quarter rest followed by eighth and quarter notes. The piano accompaniment features a treble line with chords and a bass line with quarter notes. Dynamic markings 'p' are present. The system ends with a double bar line.



me - yos pen - sa - men - tos cin - de - si - te - pa - ou - de - to -

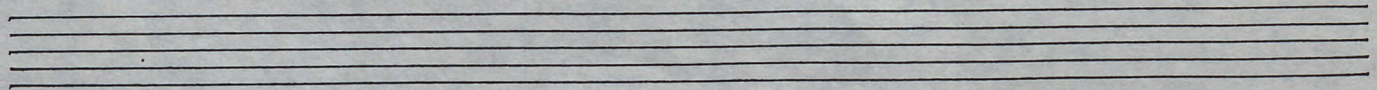
The first system of the handwritten musical score consists of three staves. The top staff is the vocal line, written in G major (one sharp) and 4/4 time. It contains the lyrics "me - yos pen - sa - men - tos cin - de - si - te - pa - ou - de - to -". The middle and bottom staves are piano accompaniment, with the bottom staff starting with a piano (p.) dynamic marking. The music is written in a simple, accessible style.

men - tos vos fi - zer a tu - a

The second system continues the musical piece. The vocal line (top staff) has the lyrics "men - tos vos fi - zer a tu - a". The piano accompaniment (middle and bottom staves) continues with chords and a melodic line. The bottom staff begins with a piano (p.) dynamic marking.

ti - a De - xa - o tu fu - so gi -

The third system concludes the visible portion of the handwritten musical score. The vocal line (top staff) has the lyrics "ti - a De - xa - o tu fu - so gi -". The piano accompaniment (middle and bottom staves) provides harmonic support. The bottom staff begins with a piano (p.) dynamic marking.



Handwritten musical score for the first system. It consists of three staves. The top staff is a vocal line in G major (one sharp) with lyrics: "nar Dxi-xa a tau fu - so yi -". The middle and bottom staves are piano accompaniment. The first measure of the piano part has a '7' above it, indicating a barre. The system ends with a double bar line and a treble clef on the right.

Handwritten musical score for the second system. It consists of three staves. The top staff is a vocal line with lyrics: "nar" followed by a rest and then "bre". The middle and bottom staves are piano accompaniment. The system ends with a double bar line.

Handwritten musical score for the third system. It consists of three staves. The top staff is a vocal line with lyrics: "a me - ri - na ha - de ca - ser." followed by a long note. The middle and bottom staves are piano accompaniment. The system ends with a double bar line.

Four empty musical staves at the bottom of the page.