

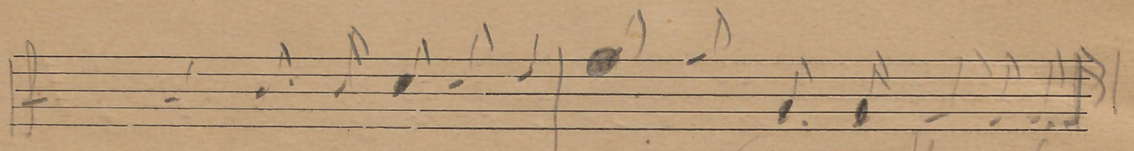
CASA MOREIRA DE SÁ—Músicas e instrumentos—105, Rua 51 de Janeiro, 107—PORTO

6 lu ar nes-ta ~~no-va~~ Oba-~~no~~ e bran-do

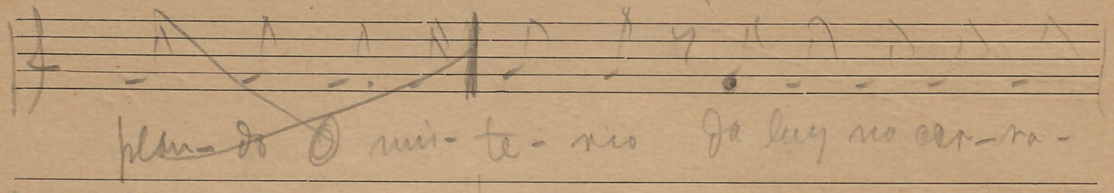
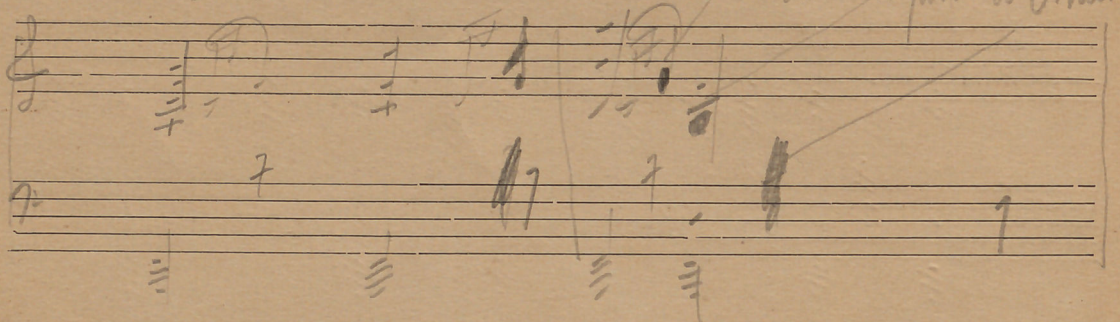
bran-do Cai de mau-si-nho seu di-a-a-tre-mo-m-

caí a a-gua en-tão ou re-ga-u-mo caí

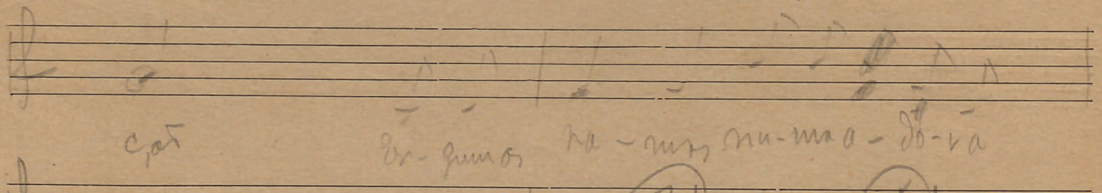
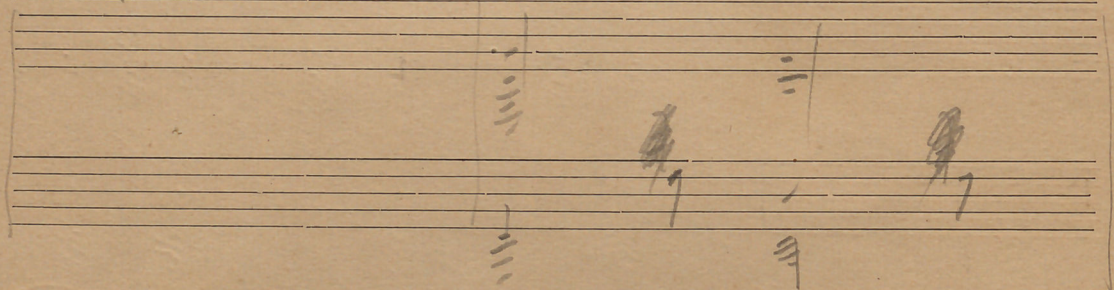
caí a mi-ta se-n-til-si-ma re-lai-do



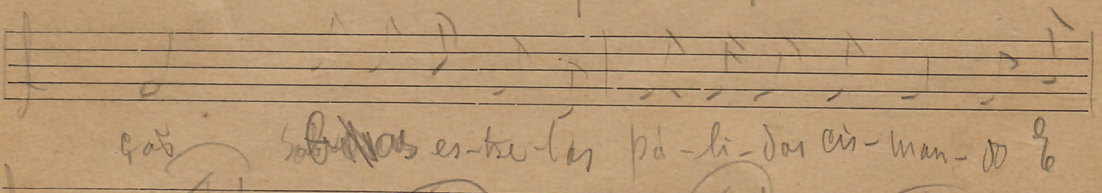
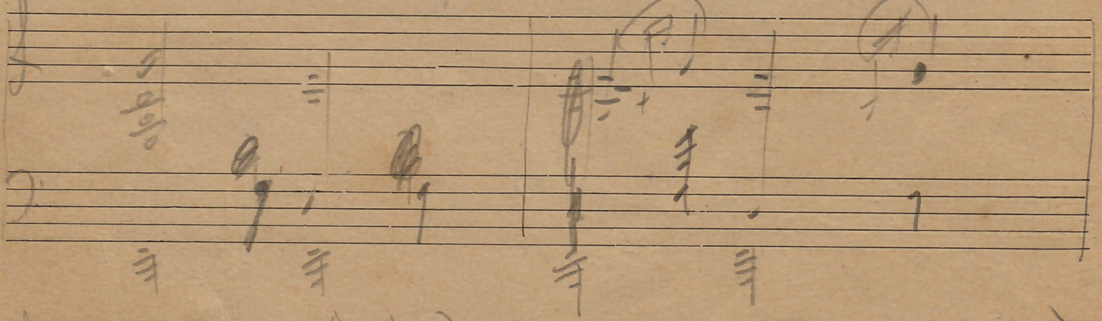
o ar-vo-re-dos e som-bros Con-ten-ção do 6 me



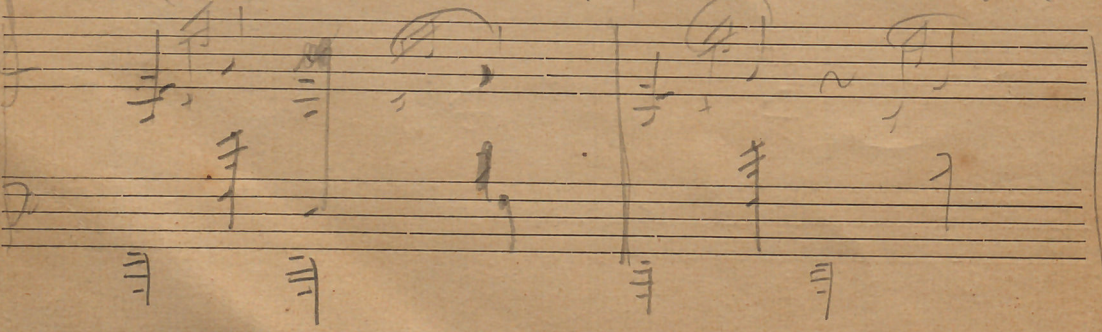
plu-do o mi-te-rio de luz no cer-ra-

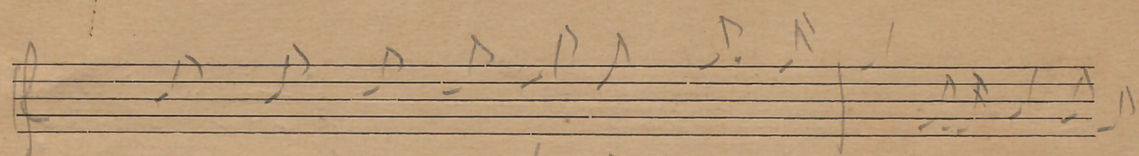


cat
do-que-ros na-um nu-mo-do-va

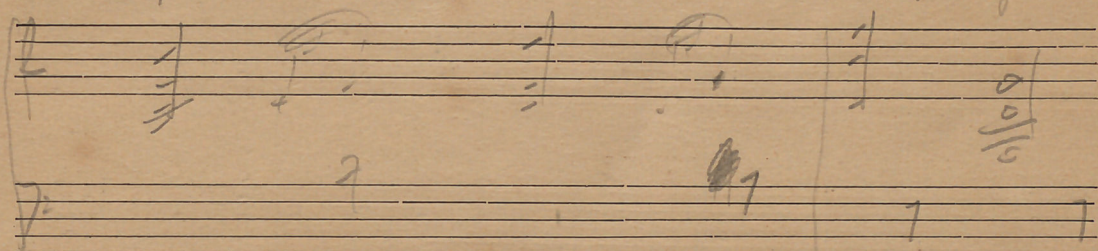


cat
es-tes-tes pa-li-dos eis-man-do 6

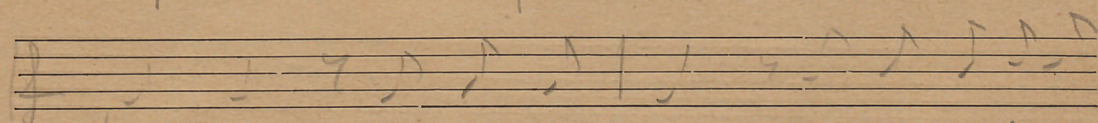
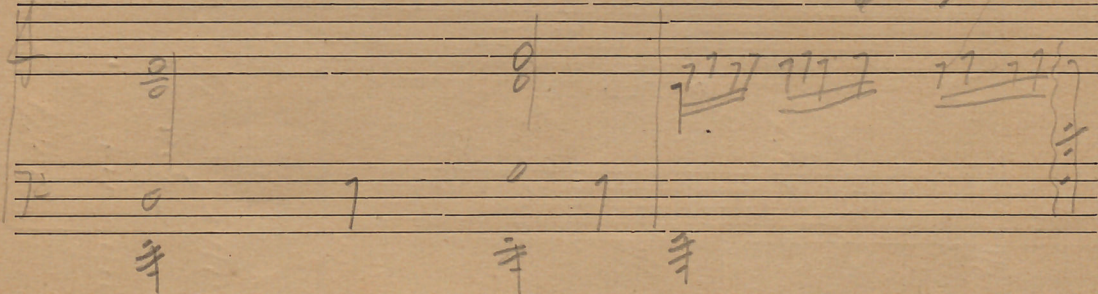




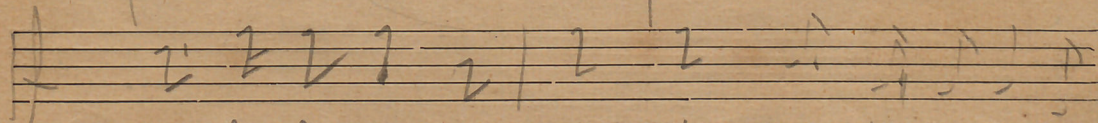
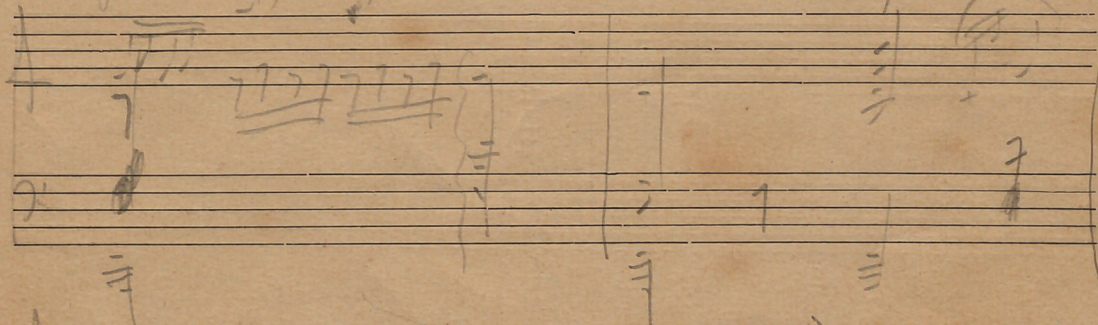
ra-mos e ro-che-dos as lu-ar no me-gra-me da



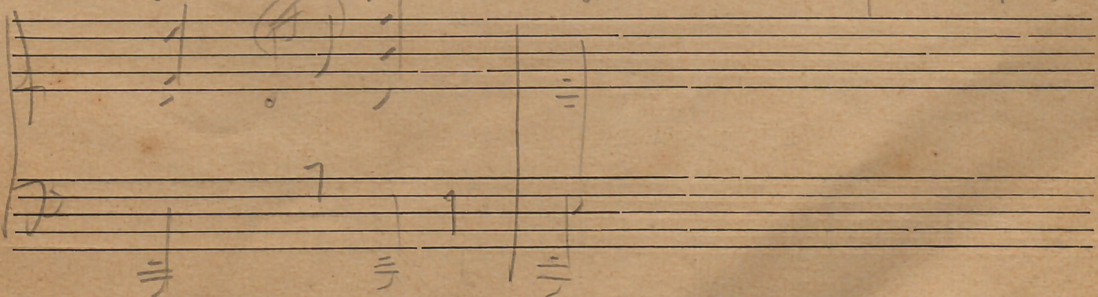
ter-ra-dor-mu-ei-da su-ma a voz do



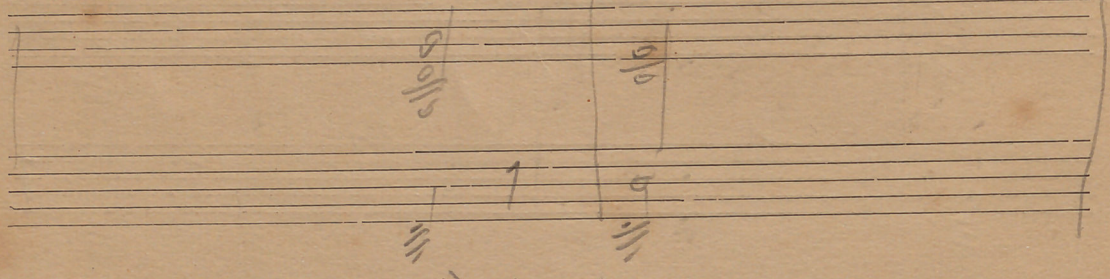
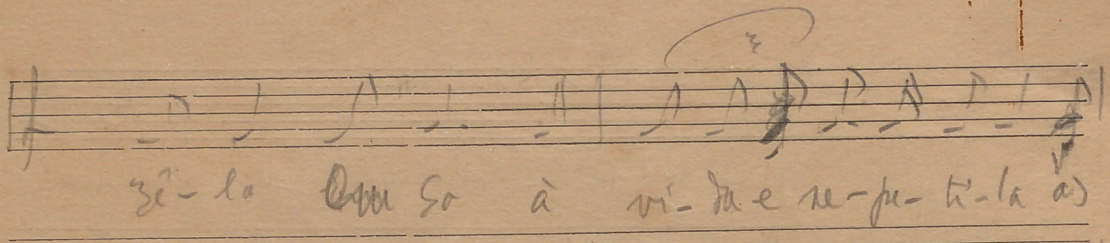
son, tes da mur-mu-ror Can-ção e-ter-na



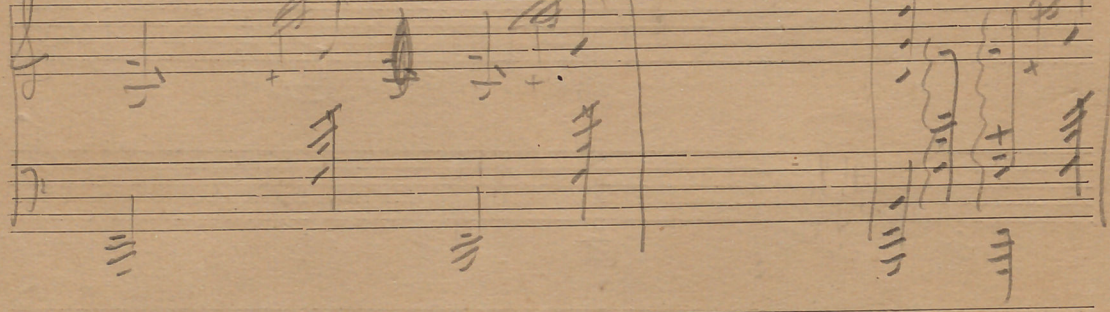
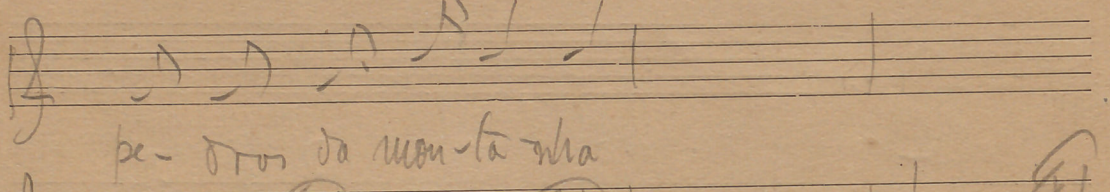
de he-le-ga e-trá-nha Quem in-de-ra di-



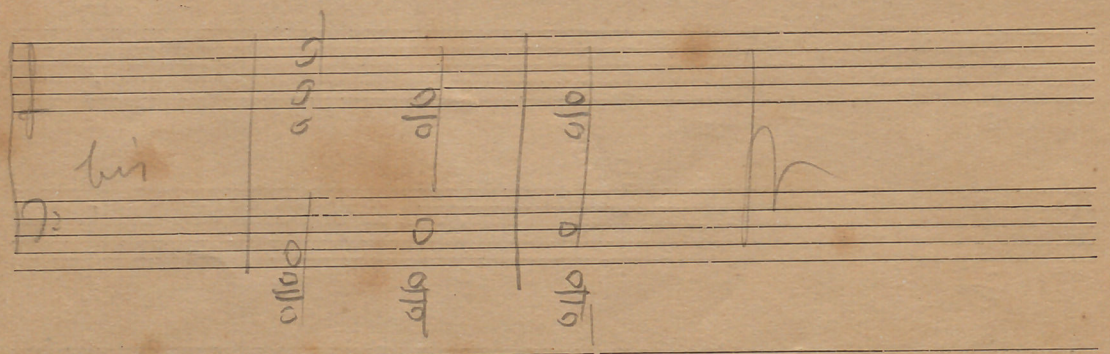
ze-la *Qu* so à vi-da e re-pu-ta-la as



pe-dros da mon-ta-nha



bis



Copyrighted material