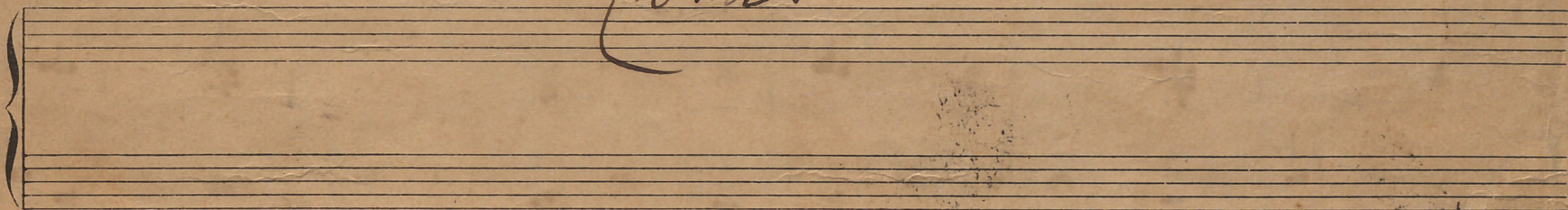
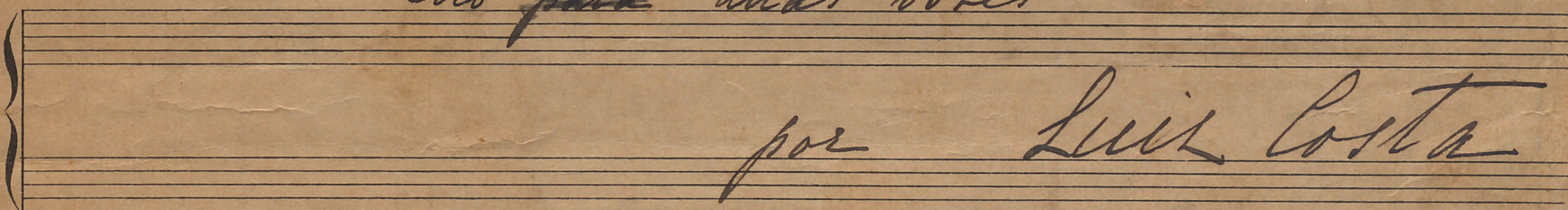


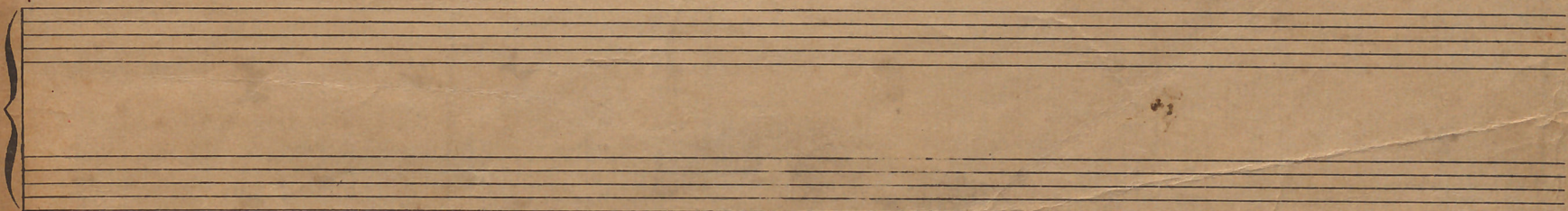
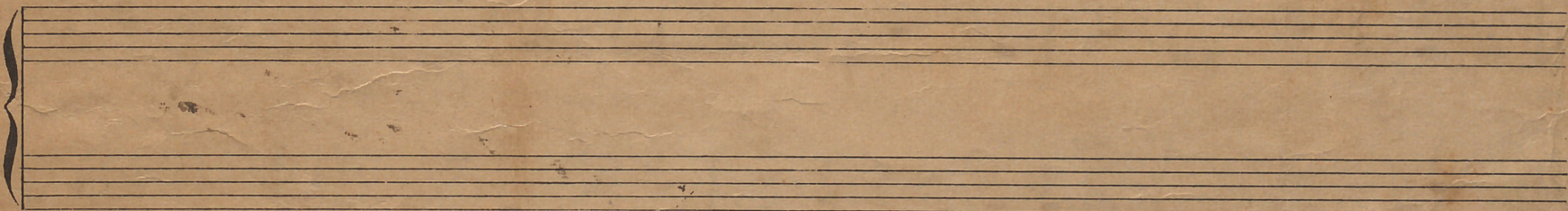
- Rosas -



Coro ^a para duas vozes



por Luiz Costa



- Rosas -
Nimas pobres de J. Vasconcellos e Sá

Piano solo
Piano a 2 mãos
de esquerda

Lento

Musical score for the piano introduction, consisting of three staves (treble, right hand, and bass). The music is in 8/8 time and D major. It features a series of chords and arpeggiated figures in the right hand, with a simple accompaniment in the left hand.

Soprano solo

Musical score for the soprano solo, consisting of a vocal line and a piano accompaniment. The vocal line has lyrics: "has-ce u-ma ro-sa ver-me-lha Co-mo uns la-bi-os de mu-lher". The piano accompaniment consists of chords in the right hand and a simple bass line in the left hand.

Lo-go ap-pa-re ce u-ma a-be-lha De-pois da ro-sa nas-cer.

Continuation of the soprano solo musical score, including the vocal line and piano accompaniment. The vocal line continues with the lyrics: "Lo-go ap-pa-re ce u-ma a-be-lha De-pois da ro-sa nas-cer."

coro

Musical score for the chorus, consisting of a vocal line and a piano accompaniment. The vocal line has lyrics: "has-ce u-ma ro-sa ver-me-lha Co-mo uns la-bi-os de mu-". The piano accompaniment features chords in the right hand and a simple bass line in the left hand.

Chor
Lo-go ap. pa-re ce u-ma a-be-lha De- pois da ro-sa mur-cha

The first system of the handwritten musical score consists of three staves. The top staff is a vocal line in treble clef with lyrics written below it. The lyrics are "Lo-go ap. pa-re ce u-ma a-be-lha De- pois da ro-sa mur-cha". The middle and bottom staves are piano accompaniment, with the middle staff in treble clef and the bottom staff in bass clef. The music is written in a simple, clear hand.

The second system of the handwritten musical score consists of three staves. The top staff is a vocal line in treble clef. The middle and bottom staves are piano accompaniment, with the middle staff in treble clef and the bottom staff in bass clef. The music is written in a simple, clear hand.

Soprano solo
mur-cha u-ma ro-sa ver-me-lha Per-dem-se as fo-lhas no ar não mais ho-poi-sa

The third system of the handwritten musical score consists of three staves. The top staff is a vocal line in treble clef with lyrics written below it. The lyrics are "mur-cha u-ma ro-sa ver-me-lha Per-dem-se as fo-lhas no ar não mais ho-poi-sa". The middle and bottom staves are piano accompaniment, with the middle staff in treble clef and the bottom staff in bass clef. The music is written in a simple, clear hand.

u-ma a-be-lha De- pois da ro-sa mur-cha

The fourth system of the handwritten musical score consists of three staves. The top staff is a vocal line in treble clef with lyrics written below it. The lyrics are "u-ma a-be-lha De- pois da ro-sa mur-cha". The middle and bottom staves are piano accompaniment, with the middle staff in treble clef and the bottom staff in bass clef. The music is written in a simple, clear hand.

Coro

mur-cha u-ma ro-sa ner-me-cha Per-dem-se as fo-lhas no ar

The first system of the handwritten musical score consists of three staves. The top staff is a vocal line in treble clef with lyrics written below it. The middle staff is a piano accompaniment in treble clef, and the bottom staff is in bass clef. The music is written in a simple, clear hand.

não mais lhe pri-se u-ma a-be-cha De-pois da ro-sa mur-cha

The second system of the handwritten musical score consists of three staves. The top staff is a vocal line in treble clef with lyrics written below it. The middle staff is a piano accompaniment in treble clef, and the bottom staff is in bass clef. The music is written in a simple, clear hand.

The third system of the handwritten musical score consists of three staves. The top staff is a vocal line in treble clef. The middle staff is a piano accompaniment in treble clef, and the bottom staff is in bass clef. The music is written in a simple, clear hand.

17-2-108