

260920 - Pap. Tip. Azevedo - Lajes, 18 - Porto

Handwritten musical notation for the first system. It consists of three staves. The top staff is a treble clef staff with rests. The middle staff is a bass clef staff with notes and accidentals (flats and naturals). The bottom staff is a guitar staff with chord diagrams and some handwritten notes like 'q.', 'dg.', and 'bg.'.

Handwritten musical notation for the second system. It consists of three staves. The top staff is a treble clef staff with notes and accidentals. The middle staff is a bass clef staff with notes and accidentals. The bottom staff is a guitar staff with chord diagrams and some handwritten notes like 'q.', 'dg.', and 'bg.'.

Handwritten musical notation for the third system. It consists of three staves. The top staff is a treble clef staff with notes and accidentals. The middle staff is a bass clef staff with notes and accidentals. The bottom staff is a guitar staff with chord diagrams and some handwritten notes like 'q.', 'dg.', and 'bg.'.

Handwritten musical notation for the first system, consisting of four staves. The notation includes various notes, rests, and accidentals (sharps, flats, naturals) across the staves.

Handwritten musical notation for the second system, consisting of two staves. The notation includes various notes, rests, and accidentals (sharps, flats, naturals) across the staves.

Handwritten musical notation for the third system, consisting of four staves. The notation includes various notes, rests, and accidentals (sharps, flats, naturals) across the staves.

Handwritten musical notation for the fourth system, consisting of two staves. The notation includes various notes, rests, and accidentals (sharps, flats, naturals) across the staves.

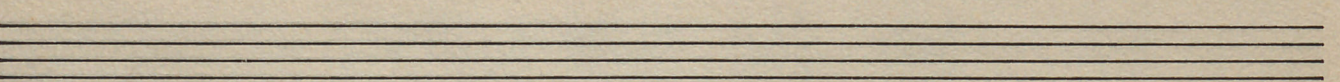
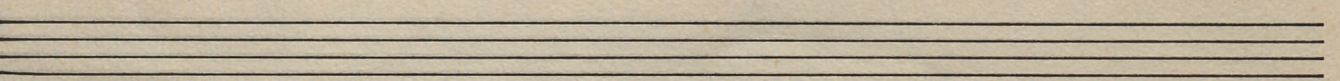
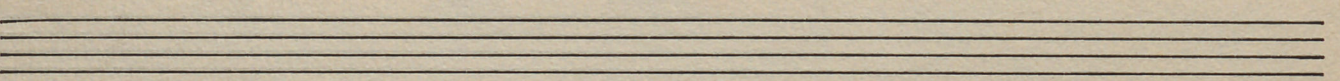
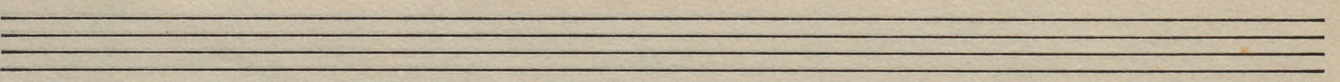
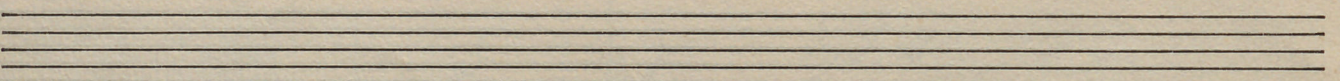
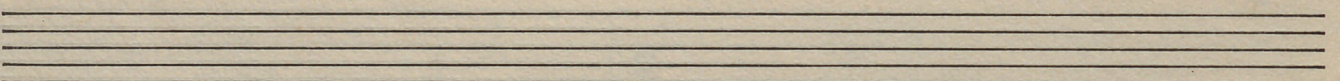
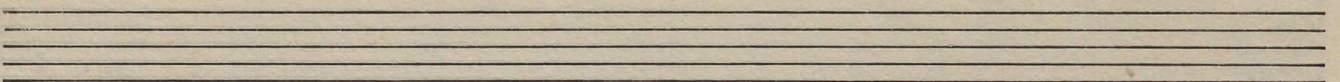
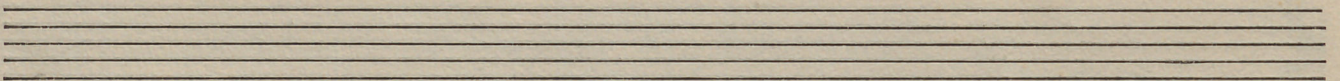
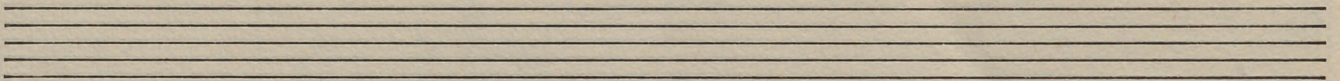
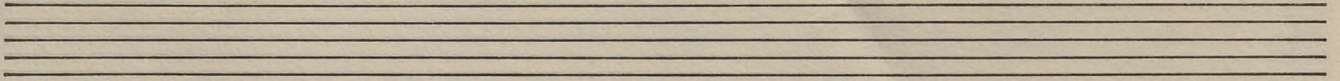
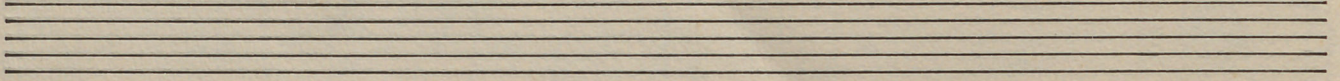
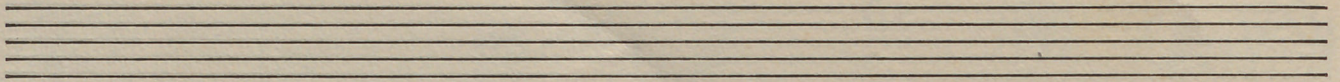
Handwritten text or markings on the right margin of the page.

nes Paginas 14
ultimos compassos

X

Handwritten musical notation on four staves, including clefs and notes, with a large 'X' drawn over the first two staves.

Handwritten musical notation on two staves, including clefs and notes, with a large 'X' drawn over the first staff.



Copyright © 1980 by G. Schirmer, Inc.

Handwritten musical notation for the first system, consisting of four staves. The top staff has a treble clef and contains notes with stems and beams. The second staff has a treble clef and contains notes with stems. The third staff has a bass clef and contains notes with stems. The fourth staff has a bass clef and contains notes with stems.

Handwritten musical notation for the second system, consisting of two staves. The top staff has a treble clef and contains a complex melodic line with many notes and beams. The bottom staff has a bass clef and contains notes with stems.

Handwritten musical notation for the third system, consisting of four staves. The top staff has a treble clef and contains notes with stems. The second staff has a treble clef and contains notes with stems. The third staff has a bass clef and contains notes with stems. The fourth staff has a bass clef and contains notes with stems.

Handwritten musical notation for the fourth system, consisting of two staves. The top staff has a treble clef and contains notes with stems. The bottom staff has a bass clef and contains notes with stems.

260920 — Pap. Tip. Azevedo - Lajes, 18 - Porto

Handwritten musical notation on a four-staff system. The top staff contains rhythmic markings: a quarter note, a half note, and a quarter note. The second staff shows notes with accidentals: a dotted quarter note with a flat, a quarter note with a flat, and a quarter note with a flat. The third staff contains rhythmic markings: a quarter note, a quarter note, and a quarter note. The bottom staff shows chords: a flat 7 chord, a flat 7 chord, a 7 chord, a 7 chord with a flat, and a flat 7 chord.

Handwritten musical notation on a grand staff (treble and bass clefs). The notation is dense with notes and accidentals, including flats and naturals. There are some markings above the notes, possibly indicating dynamics or articulation.

Handwritten musical notation on a four-staff system. The notation is sparse, consisting of rhythmic markings and notes with accidentals (flats) across the staves.

Handwritten musical notation on a grand staff (treble and bass clefs). The notation is dense with notes and accidentals, including flats and naturals. There are some markings above the notes, possibly indicating dynamics or articulation.

Vertical text on the right margin, possibly a page number or reference code.

Handwritten musical notation for the first system. It begins with a treble clef and a key signature change to one flat (B-flat). The notation includes rhythmic values and notes, with a tilde symbol (~) indicating a fermata or a specific articulation.

Handwritten musical notation for the second system. The upper staff contains a complex melodic line with many notes, some beamed together. The lower staff contains fewer notes, possibly representing a bass line or a simplified version of the melody.

Handwritten musical notation for the third system. It starts with a treble clef and a key signature change to one sharp (F-sharp). The notation shows several staves with rests, indicating a section of the piece where the instruments are silent.

Handwritten musical notation for the fourth system. It begins with a treble clef and a key signature change to one flat (B-flat). The notation shows complex melodic and bass lines, with many notes and some beaming.

250920 — Pap. Tip. Azavedo - Lajes, 18 - Porto

Handwritten musical notation on a single staff. It begins with a treble clef and a key signature of one flat (B-flat). The notation consists of a sequence of notes with stems and beams, including a slur over the first two notes. The notes are: G4, A4, Bb4, C5, Bb4, A4, G4.

Handwritten musical notation on two staves. The top staff has a treble clef and a key signature of one flat. It contains a complex rhythmic pattern with many beamed notes and some accidentals. The bottom staff has a bass clef and a key signature of one flat, with notes and stems corresponding to the top staff.

Handwritten musical notation on five staves. The top staff has a treble clef and a key signature of one flat. The notation consists of a sequence of notes with stems and beams, including a slur over the first two notes. The notes are: G4, A4, Bb4, C5, Bb4, A4, G4.

Handwritten musical notation on two staves. The top staff has a treble clef and a key signature of one flat. It contains a complex rhythmic pattern with many beamed notes and some accidentals. The bottom staff has a bass clef and a key signature of one flat, with notes and stems corresponding to the top staff.

Handwritten musical notation on four staves. The first staff contains chord symbols: ♯, ♯, ♯, ♭, ♯, ♯. The second staff contains notes: ♯, ♭, ♭, ♯, ♯, ♭. The third staff contains notes: ♯, ♯, ♯, ♭, ♯, ♯. The fourth staff contains notes: ♯, ♭.

Handwritten musical notation on two staves. The top staff contains a melodic line with eighth and sixteenth notes, including accidentals like ♭ and ♯. The bottom staff contains chord symbols: ♯, ♯, ♯.

Handwritten musical notation on four staves. The first staff is mostly empty with a few notes. The second staff contains notes: ♭, ♭, ♭, ♭, ♭. The third staff contains notes: ♭, ♭, ♭, ♭, ♭. The fourth staff contains chord symbols: ♯, ♯, ♭, ♭, ♭, ♯.

Handwritten musical notation on two staves. The top staff contains a melodic line with eighth and sixteenth notes, including accidentals like ♭ and ♯. The bottom staff contains chord symbols: ♯, ♯, ♯, ♯.

Handwritten musical notation system 1, consisting of four staves. The top staff is a treble clef with notes and accidentals. The second staff is a treble clef with notes and accidentals. The third staff is a bass clef with notes and accidentals. The bottom staff is a bass clef with notes and accidentals.

Handwritten musical notation system 2, consisting of two staves. The top staff is a treble clef with notes and accidentals. The bottom staff is a bass clef with notes and accidentals.

Handwritten musical notation system 3, consisting of four staves. The top staff is a treble clef with notes and accidentals. The second staff is a treble clef with notes and accidentals. The third staff is a bass clef with notes and accidentals. The bottom staff is a bass clef with notes and accidentals.

Handwritten musical notation system 4, consisting of two staves. The top staff is a treble clef with notes and accidentals. The bottom staff is a bass clef with notes and accidentals.

Handwritten musical notation for the first system, consisting of four staves. The top staff has a treble clef and contains notes with stems and beams. The second staff has a treble clef and contains notes with stems. The third staff has a bass clef and contains notes with stems. The bottom staff has a bass clef and contains notes with stems and beams.

Handwritten musical notation for the second system, consisting of two staves. The top staff has a treble clef and contains notes with stems and beams. The bottom staff has a bass clef and contains notes with stems and beams.

Handwritten musical notation for the third system, consisting of four staves. The top staff has a treble clef and contains notes with stems and beams. The second staff has a treble clef and contains notes with stems. The third staff has a bass clef and contains notes with stems. The bottom staff has a bass clef and contains notes with stems and beams.

Handwritten musical notation for the fourth system, consisting of two staves. The top staff has a treble clef and contains notes with stems and beams. The bottom staff has a bass clef and contains notes with stems and beams.