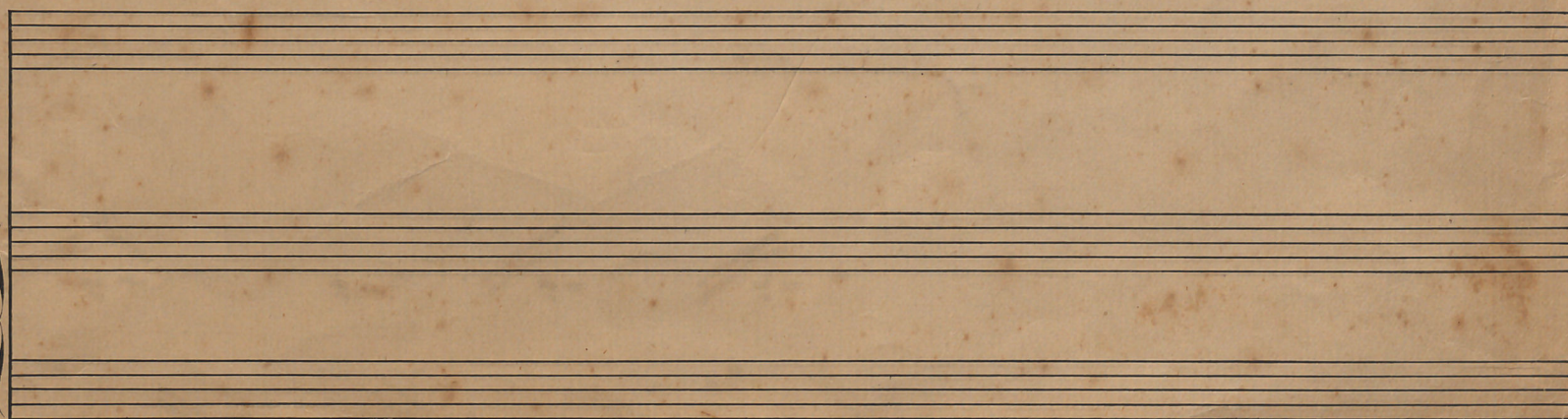
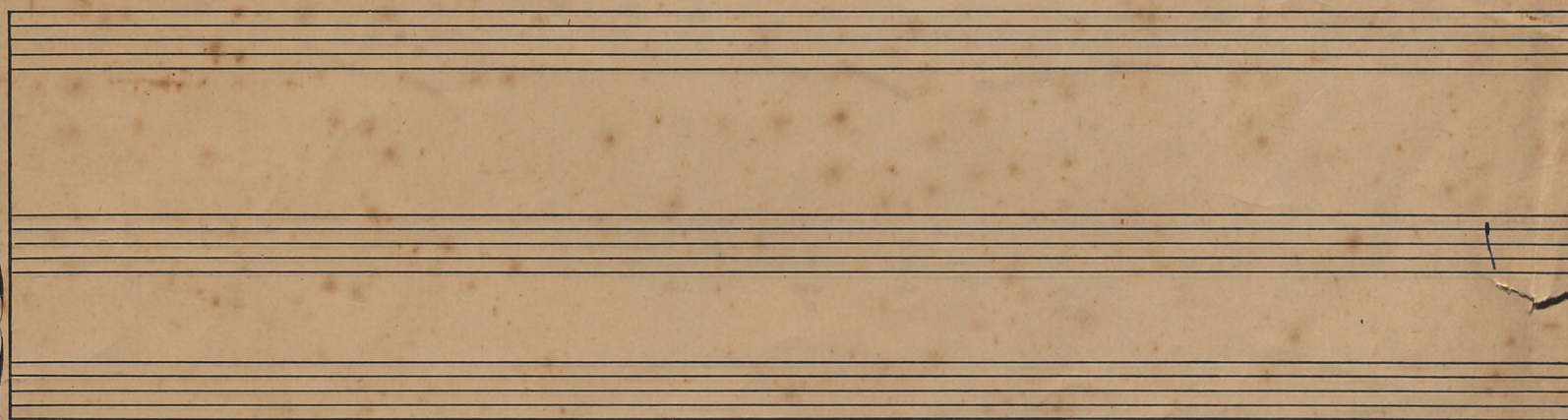
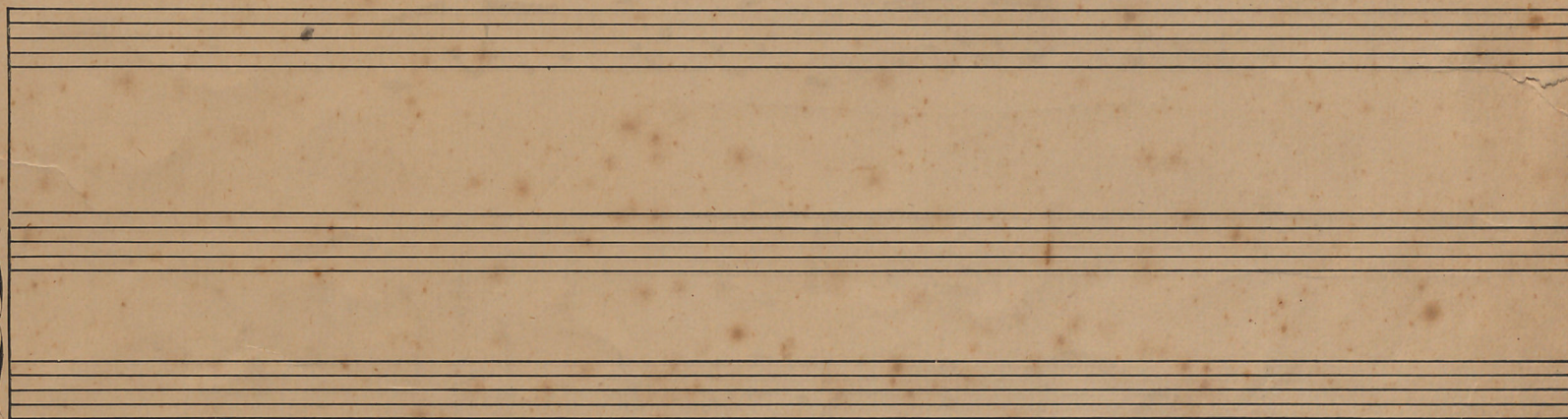
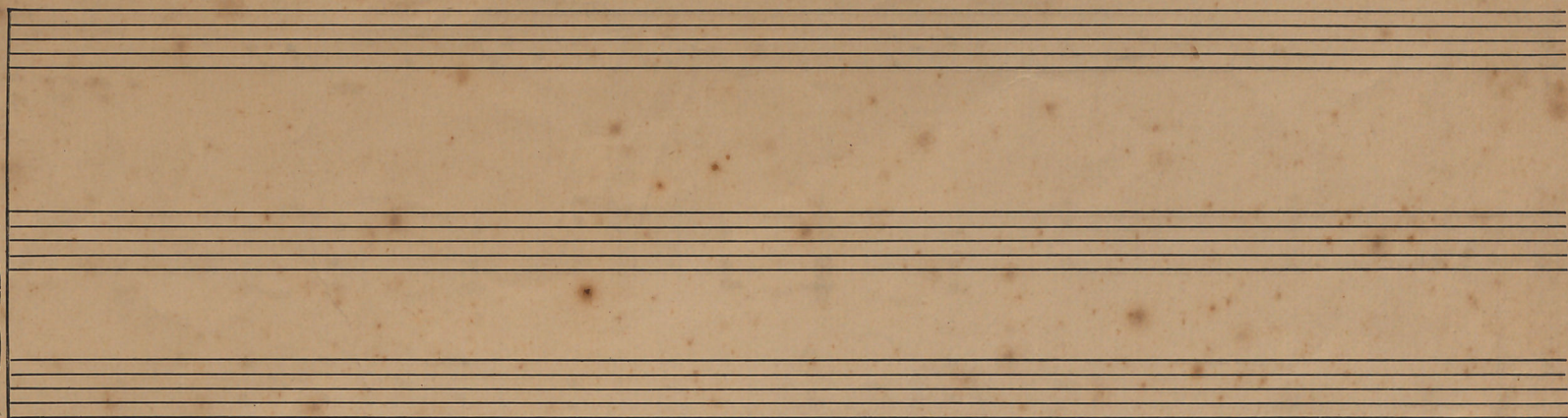


164 a





312

Handwritten musical notation for the first system, consisting of a single melodic line and a piano accompaniment. The piano part features dense, repeated chords with slanted stems. There are three 'X' marks above the piano staff and a '5' below it.

Handwritten musical notation for the second system, continuing the melodic and piano accompaniment. There are two 'X' marks above the piano staff.

Handwritten musical notation for the third system. The piano part continues with dense chords. The instruction *forte, sempre crescendo* is written in cursive above the piano staff.

Handwritten musical notation for the fourth system. The piano part is heavily crossed out with a large 'X'. The instruction *rall.* is written above the piano staff. The system concludes with a double bar line and a key signature change to two sharps.

5

Con Fortina

Handwritten musical notation for the first system. It features a treble clef staff with a key signature of one sharp (F#) and a grand staff with piano accompaniment. The notation includes various notes, rests, and dynamic markings. The tempo/mood is indicated as "Con Fortina".

Handwritten musical notation for the second system. It features a treble clef staff with a key signature of one sharp (F#) and a grand staff with piano accompaniment. The notation includes various notes, rests, and dynamic markings.

Handwritten musical notation for the third system. It features a treble clef staff with a key signature of one sharp (F#) and a grand staff with piano accompaniment. The notation includes various notes, rests, and dynamic markings.

Handwritten musical notation for the fourth system. It features a treble clef staff with a key signature of one sharp (F#) and a grand staff with piano accompaniment. The notation includes various notes, rests, and dynamic markings.