

(Adormecendo a boneca)

Fritz Costa

Lento

Violino

Piano

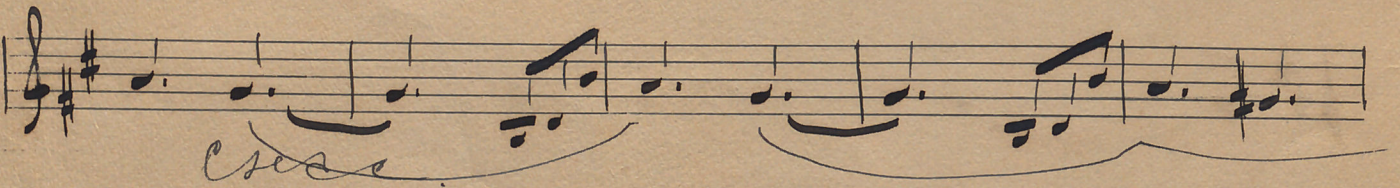
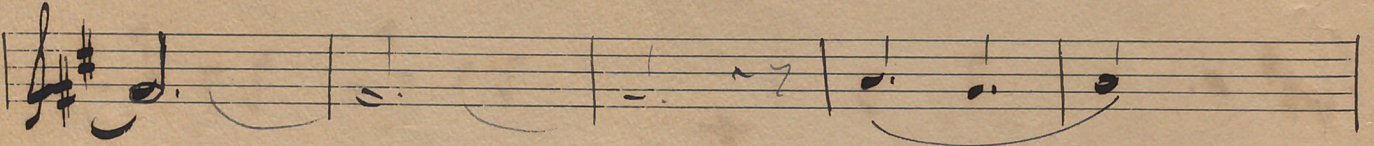
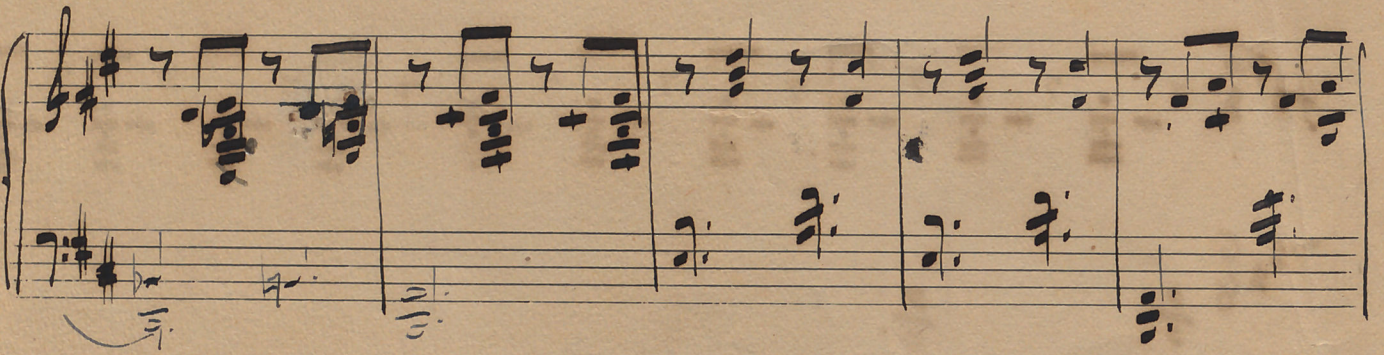
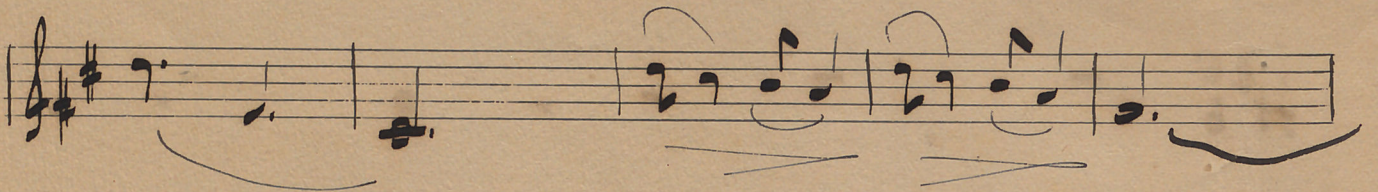
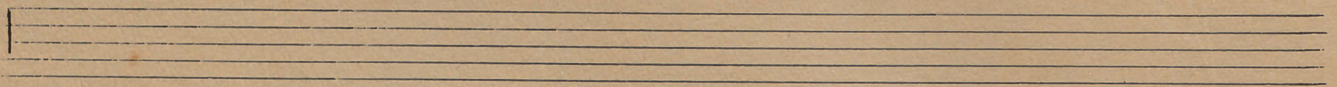
The first system of the handwritten musical score. The Violino part (top staff) begins with a treble clef, a key signature of two sharps (F# and C#), and a 6/8 time signature. It contains a few notes, including a half note G4 and a quarter note A4. The Piano part (bottom two staves) starts with a treble clef, the same key signature and time signature, and contains a rhythmic accompaniment of eighth notes. The bass staff contains a simple harmonic accompaniment with notes like G3, B2, and D3.

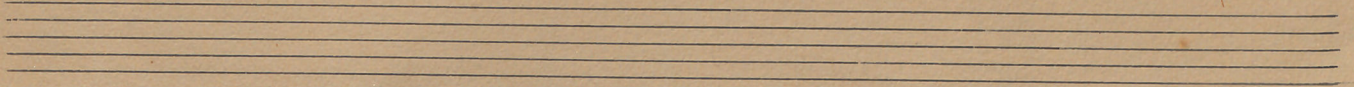
The second system of the handwritten musical score, featuring the Violino part. It continues the melodic line from the first system, with notes like A4, B4, and C5. There are some markings below the staff, possibly indicating phrasing or dynamics.

The third system of the handwritten musical score, featuring the Piano part. The rhythmic accompaniment continues with eighth notes in the treble staff and a steady bass line in the bass staff. The notes in the bass staff include G3, B2, and D3.

The fourth system of the handwritten musical score, featuring the Violino part. The melodic line continues with notes like D5, C5, and B4. There are some markings below the staff, possibly indicating phrasing or dynamics.

The fifth system of the handwritten musical score, featuring the Piano part. The rhythmic accompaniment continues with eighth notes in the treble staff and a steady bass line in the bass staff. The notes in the bass staff include G3, B2, and D3.





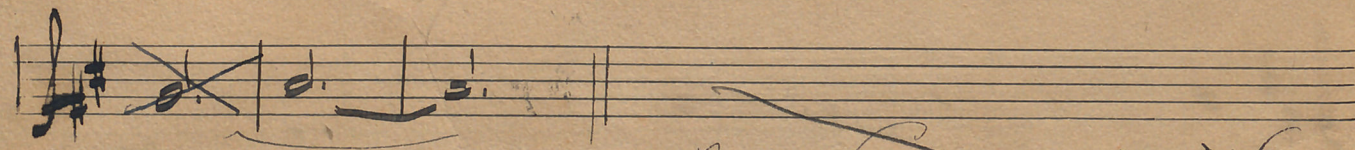
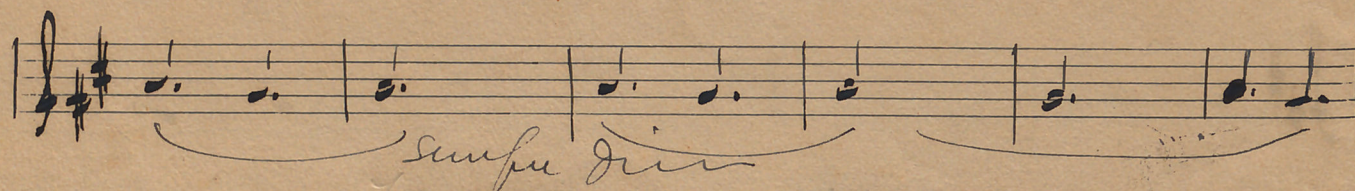
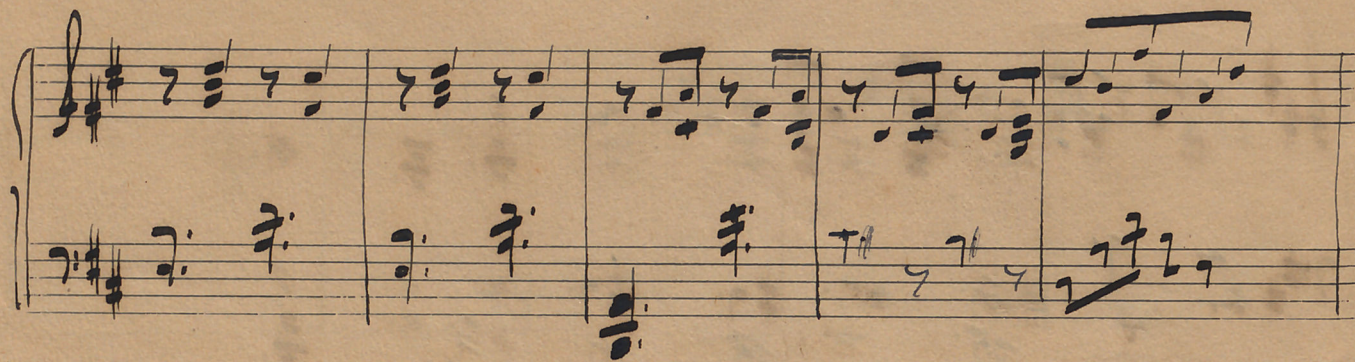
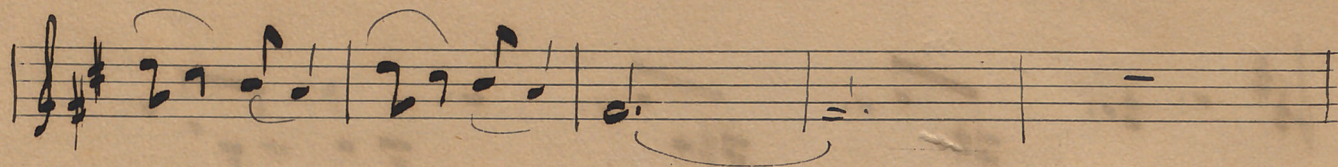
Handwritten musical score on aged paper, featuring a treble clef and a key signature of two sharps (F# and C#). The score is organized into four systems, each with a single melodic line and a piano accompaniment.

System 1: The melodic line begins with a half note G4, followed by quarter notes A4, B4, and C5. The piano accompaniment consists of a steady eighth-note pattern in the right hand and a bass line in the left hand. A dynamic marking of *mf* is present.

System 2: The melodic line continues with quarter notes D5, E5, and F#5, followed by a half note G5. The piano accompaniment features a more complex texture with chords and moving lines. A dynamic marking of *mf* is present.

System 3: The melodic line starts with a half note G5, followed by quarter notes F#5, E5, and D5. The piano accompaniment includes a prominent bass line with a dynamic marking of *pp*.

System 4: The melodic line concludes with quarter notes C5, B4, and A4. The piano accompaniment continues with a similar texture to the previous systems, ending with a dynamic marking of *pp*.



*poro Comercio sobant
ilustrado - total 1932*

