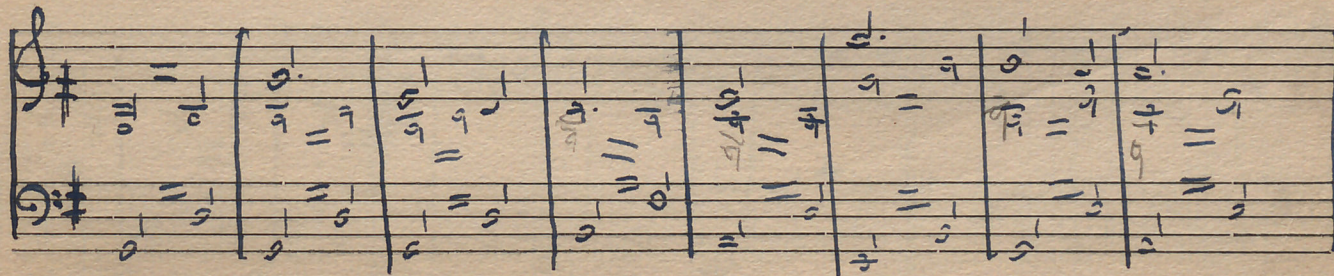
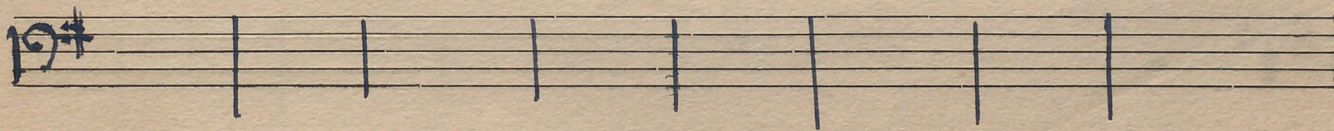
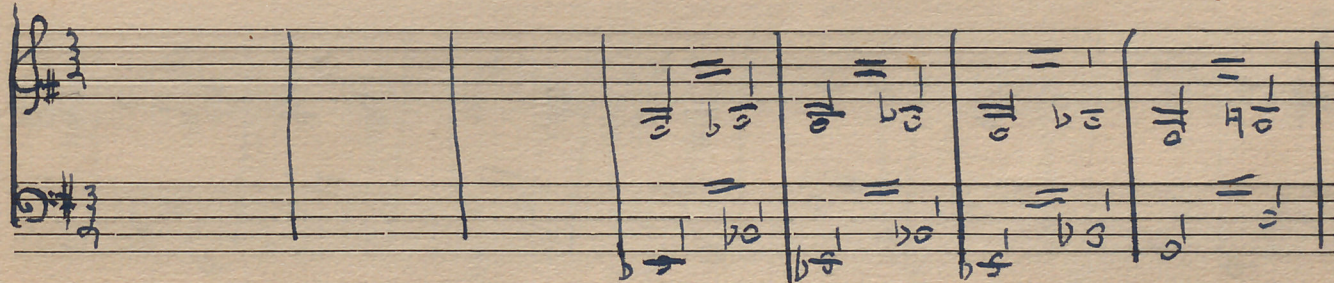
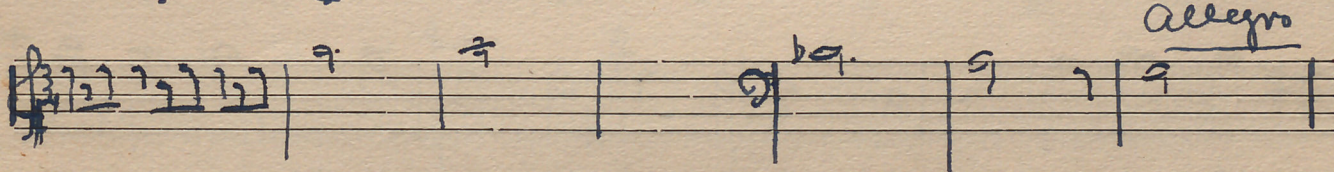
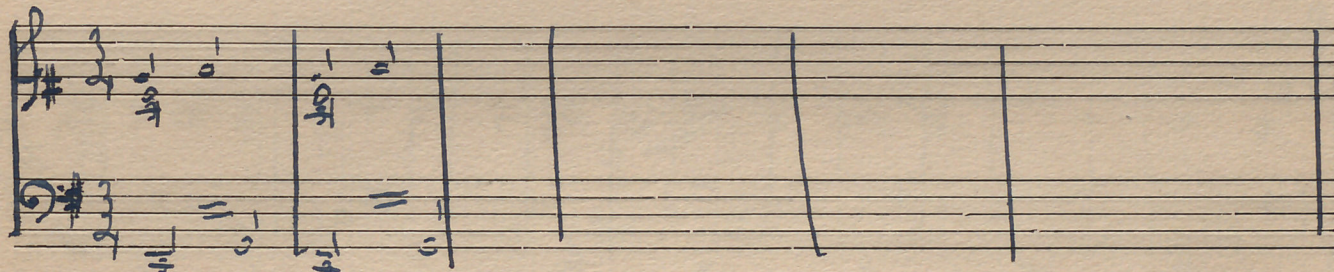
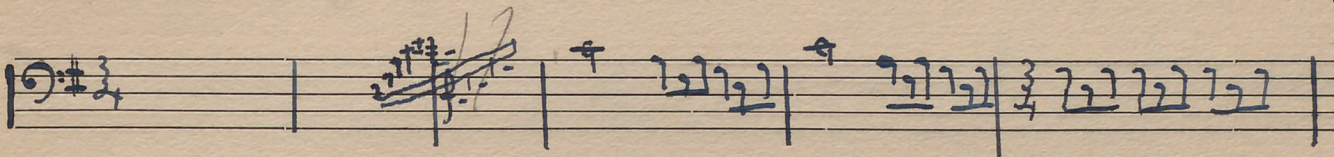
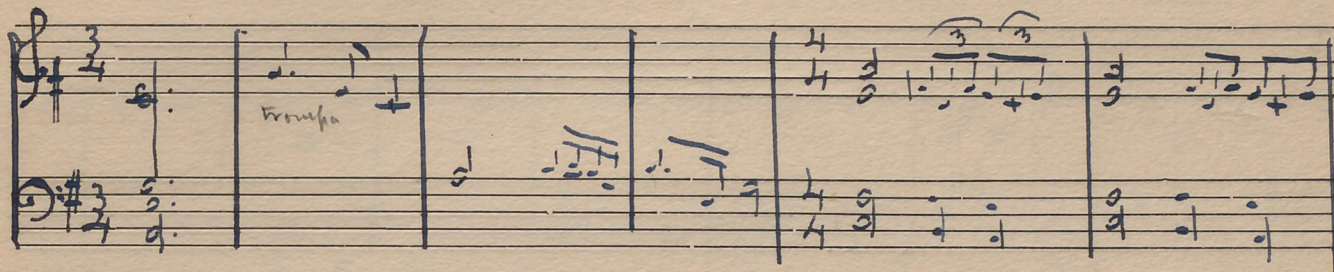
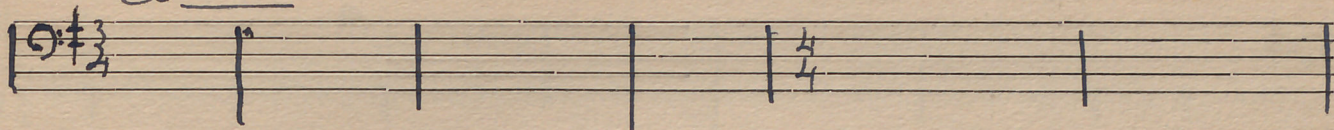


= Poema = op.
para Violoncello e orquestra

177 de e
Luis Glosco

Andante



Handwritten musical notation on a single staff. It begins with a treble clef and a key signature of one sharp (F#). The notation consists of a complex melodic line with many beamed notes, ending with a fermata.

Handwritten musical notation on two staves. The top staff has a treble clef and the bottom staff has a bass clef. Both are in a key signature of one sharp (F#). The notation shows a melodic line in the treble and a bass line in the bass.

Handwritten musical notation on a single staff. It begins with a treble clef and a key signature of one sharp (F#). The notation consists of a complex melodic line with many beamed notes and a fermata at the end.

Handwritten musical notation on two staves. The top staff has a treble clef and the bottom staff has a bass clef. Both are in a key signature of one sharp (F#). The notation shows a melodic line in the treble and a bass line in the bass.

A blank musical staff with a treble clef and a key signature of one sharp (F#).

Handwritten musical notation on two staves. The top staff has a treble clef and the bottom staff has a bass clef. Both are in a key signature of one sharp (F#). The notation shows a melodic line in the treble and a bass line in the bass.

Handwritten musical notation on a single staff. It begins with a treble clef and a key signature of one sharp (F#). The notation consists of a complex melodic line with many beamed notes and a fermata at the end.

Handwritten musical notation on two staves. The top staff has a treble clef and the bottom staff has a bass clef. Both are in a key signature of one sharp (F#). The notation shows a melodic line in the treble and a bass line in the bass.

Handwritten musical notation on a three-staff system. The top staff is a treble clef with a key signature of one sharp (F#) and a common time signature (C). The middle staff contains dense vertical lines and some notes, with the word "Pianta" written below it. The bottom staff contains a sequence of notes and rests.

Handwritten musical notation on a three-staff system. The top staff is a treble clef with a key signature of one sharp (F#) and a common time signature (C). The middle staff contains notes and rests, with some markings above. The bottom staff contains notes and rests.

Four sets of empty musical staves, each consisting of five lines.

