



Handwritten musical notation on a single staff, featuring a treble clef, a key signature of one sharp (F#), and a common time signature (C). The notation includes a whole note chord, followed by a half note, and then a series of eighth notes with beams, ending with a quarter note.

Handwritten musical notation on two staves. The upper staff is in treble clef and contains a series of eighth notes with beams. The lower staff is in bass clef and contains a series of chords and notes, including a whole note chord and a half note.

Handwritten musical notation on a single staff, featuring a treble clef and a key signature of one sharp (F#). The notation includes a series of eighth notes with beams, followed by a quarter note and a half note.

Handwritten musical notation on two staves. The upper staff is in treble clef and contains a series of notes with stems and beams. The lower staff is in bass clef and contains a series of chords and notes, including a whole note chord and a half note.

Handwritten musical notation on a single staff, featuring a treble clef and a key signature of one sharp (F#). The notation includes a series of notes with stems and beams, followed by a quarter note and a half note.

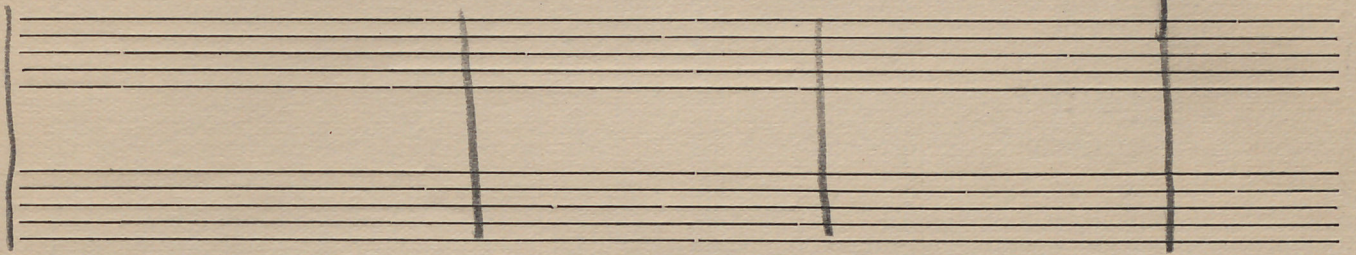
Handwritten musical notation on two staves. The upper staff is in treble clef and contains a series of notes with stems and beams. The lower staff is in bass clef and contains a series of chords and notes, including a whole note chord and a half note.

Handwritten musical notation on a single staff, featuring a treble clef and a key signature of one sharp (F#). The notation includes a series of notes with stems and beams, followed by a quarter note and a half note.

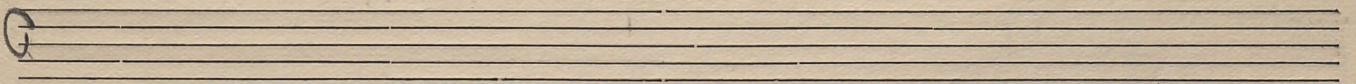
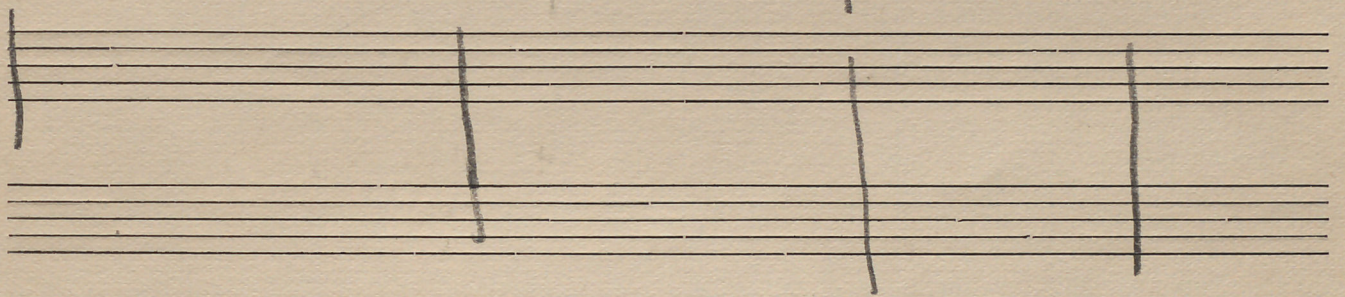
Handwritten musical notation on two staves. The upper staff is in treble clef and contains a series of notes with stems and beams. The lower staff is in bass clef and contains a series of chords and notes, including a whole note chord and a half note.



Handwritten musical notation on a single staff, featuring a treble clef, a key signature of one flat (B-flat), and a series of rhythmic notes with stems and beams.



Handwritten musical notation on a single staff, featuring a treble clef, a key signature of one flat (B-flat), and a series of rhythmic notes with stems and beams.



Handwritten musical notation on a single staff, featuring a treble clef and a series of six whole notes with stems, each in a separate measure.

